

**Mat Collishaw. Dialogues**

**Fundació Sorigué**

**April – May 2019**

**[www.fundaciosorigue.com/matcollishaw](http://www.fundaciosorigue.com/matcollishaw)**

**The organization has one of the most renowned private collections  
of contemporary art in Spain**

## **The Fundació Sorigué makes its debut in Madrid with the thought-provoking work of Mat Collishaw**

- **The Lleida-based foundation is hosting an exhibition for the first time in Madrid at the Pabellón Villanueva in the Real Jardín Botánico from March 30 to May 24.**
- ***Mat Collishaw. Dialogues* is the British artist's first solo exhibition in Spain and revolves around two key themes present in his work: nature and art history.**
- **The works in the exhibition enter into a natural dialogue with the environment. In the first section, the works engage with the Real Jardín Botánico; in the second section, a connection is forged with the masterpieces on display in the neighbouring Museo Nacional de El Prado.**
- **In its desire to bring contemporary art to all audiences, Fundació Sorigué is offering 1,600 free tickets to the exhibition through its website. These include a guided tour as well as an educational program and various activities revolving around the exhibition.**



MAT COLLISHAW, ALBION. 2017  
COURTESY THE ARTIST AND BLAIN SOUTHERN

**Madrid, March 29** – Works by British artist Mat Collishaw are being exhibited for the first time in Spain, opening to the public on March 30 at the Pabellón Villanueva in the Real Jardín Botánico. ***Mat Collishaw. Dialogues* is the first exhibition organized by the Fundació Sorigué in Madrid.**

***Mat Collishaw. Dialogues* is also the artist's first solo exhibition in Spain** and offers an insight into his dark and compelling world through seminal works and rarely seen pieces – including works from Fundació Sorigué's own collection. Collishaw is part of a key generation of British artists known as the Young British Artists, who came to prominence by exhibiting at the legendary group show *Freeze* in 1988 – an exhibition that has entered modern art history and was instrumental in placing British art at the forefront of the global art scene. His work *Bullet Hole*, from 1988 became one of the defining images of the exhibition and the movement. This now iconic piece established Collishaw's preference for the use of images that are both viscerally shocking and oddly beautiful.

Comprising 30 works including sculptures, photographs, films, and large-format installations from across the last 20 years of his career, the exhibition envelops the viewer in a twilight

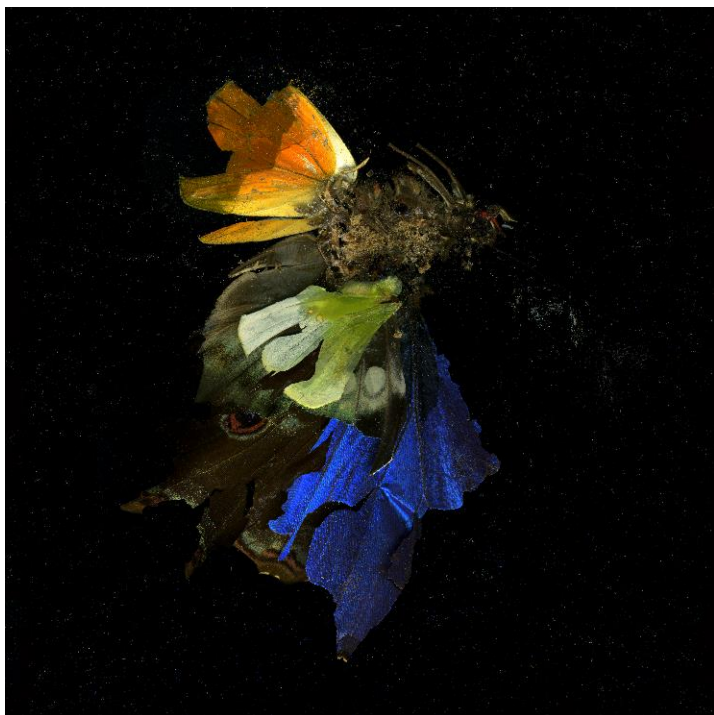
# FUNDACIÓ SORIGUÉ

world of the seductive and the revolting, the familiar and the shocking, the poetic and the morbid. The beauty of Collishaw's work is to seduce, captivate and hypnotise, whilst encouraging viewers to explore humanities darker side.

Ana Vallés, President of Sorigué and Director of the Fundació Sorigué, says that this exhibition responds to the desire to support artistic creation: "We are driven by bringing contemporary art to all audiences and promoting talent and knowledge through art, because we believe that both the corporate and cultural world and society in general benefit mutually from this exchange," she said. This is precisely the philosophy of the **PLANTA** project, an innovative business management tool that serves as an intersection between the Sorigué group and the foundation and is **one of the reasons why the Real Jardín Botánico was chosen** as the place for the first exhibition in Madrid.

The Fundació Sorigué has been promoting giving back to society from the Sorigué business group for more than 25 years through social, educational, and cultural activities, especially in those places where the company is present. The foundation has one of the most recognized private collections of contemporary art in Spain and organizes temporary exhibitions focused on bringing contemporary artistic creation to all audiences.

## About Mat Collishaw. Dialogues



MAT COLLISHAW, INSECTICIDE 15, 2009  
COURTESY THE ARTIST AND BLAIN SOUTHERN

The exhibition is divided into two areas, which correspond to the wings of the Pabellón Villanueva and which represent some of the artist's preoccupations: nature and art history.

"Nature and art history are two themes that have been present in my work for over 20 years. I've drawn from them to explore how we create images of the world around us and the way those images influence or change the way we see the world", says the artist about the two axis that frame the exhibition.

To make this a reality, the interior of the two spaces in the pavilion has been totally transformed to create an atmosphere swathed in darkness and divided into a series of rooms built to accommodate the 30 pieces on display, some of them large-format installations measuring more than 5 meters.

Inspired by its setting within the Real Jardín Botánico, the first half of the exhibition focuses on works that draw from nature. In his *Insecticide* series



# FUNDACIÓ SORIGUÉ

(2006-2014), butterflies are crushed and then enlarged to an exaggerated scale. The works capture the lifeless bodies of the insects, suspended in darkness and yet illuminated by the vibrant hues of their torn wings appearing both beautiful and tragic. Collishaw says: "It seemed to me this was a very simple example of the work being an act of death: *petit morte* [...] It records an act of violence but can also produce some quite beautiful images". In another of Collishaw's large scale installation, *Retrospectre* (2010), inspired by the films of Sergei Parajanov, at first mimics a makeshift shrine, but as scenes of animal sacrifices and shots of tempestuous, apocalyptic landscapes emerge, the work transforms into a dark, ghostly cabinet of curiosities.

The second part of the exhibition examines how Collishaw mines and references myth and art history, often creating a contemporary dialogue with past masters. Collishaw's complex works are rooted in iconic images from art history, cultural references that the artist plays upon in order to transform them into metaphors for contemporary society. The show establishes an interesting dialogue with works exhibited in the Museo Nacional del Prado. These works unite tradition and modernity, but above all they embody concerns inherent to human beings over the centuries, like the transience of life or the representation of horror. *All Things Fall* (2014), a work hailed as 'nothing less than a contemporary masterpiece' by The Sunday Times critic Waldemar Januszczak, is based on the Biblical story of The Massacre of the Innocents, it combines old technology in the form of a zoetrope with modern 3D printing. As the zoetrope spins, the optical illusion engages and seduces the viewer before they fully realise they are complicit in a scene of genocide.

Collishaw often deals with issues that are morally and politically charged, in his photographic series *Last Meal on Death Row, Texas* (2011), he presents photographs in the manner of 17th century Flemish still life painting to portray the final meals requested by inmates on death row. The emotional and psychological gravity of each last meal portrayal resonates with a genre rife with overtones of mortality, isolation, and decadence. Collishaw's work drags our darkest urges into the light – illustrating that humans will never overcome their base instincts, regardless of aesthetic or scientific advancement.

## About Mat Collishaw

Mat Collishaw (Nottingham, 1966), lives and works in London. He completed his Fine Art studies at Goldsmith's College in 1989, studying alongside Sarah Lucas, Damien Hirst, and Tracey Emin, figures of the generation known as the Young British Artists who began their career at the same college. His first solo exhibition was in 1990.

Collishaw's oeuvre combines a comprehensive range of photography, video, and installation using a combination of different techniques and technological tools, making him one of the most interesting British artists of his generation.

Collishaw's work has been exhibited in numerous solo exhibitions globally including; *Magic Lantern*, a major installation in the cupola at the Victoria and Albert Museum in London (2010); *Black Mirror* at the Galleria Borghese (2014); a major survey exhibition at The New Art Gallery Walsall (2015) and *Standing Water* at the Galerie Rudolfinum in Prague (2018), where his creations entered into dialogue with preexisting spaces and art pieces.

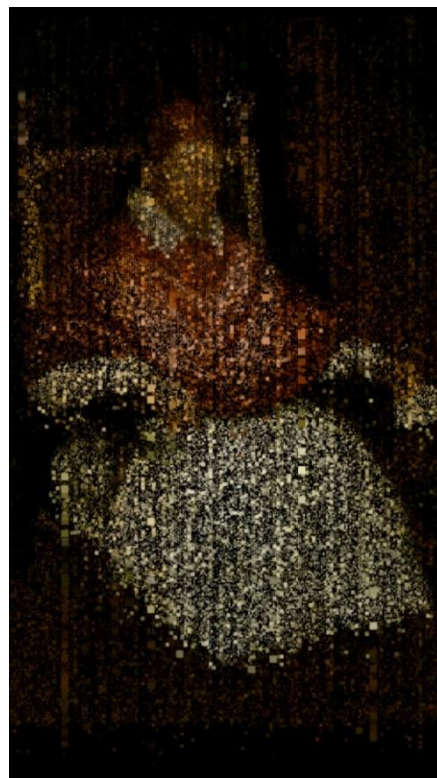
# FUNDACIÓ SORIGUÉ

## About the Fundació Sorigué

Fundació Sorigué promotes the Sorigué business group's desire to give back; the group supports the circular economy and is a leader in the sectors of construction, urban services—landscaping and waste collection and treatment—, engineering and water and materials science, and has been committed to innovation and sustainability since its beginnings.

The Foundation carries out its activities in the social, cultural, and educational fields and is known particularly for having one of the most distinguished private collections of contemporary art in Spain. From its headquarters in Lleida, the Fundació Sorigué houses the collection and schedules temporary exhibitions focused on bringing contemporary artistic creation to all audiences through artists such as Antonio López, Wim Wenders, Chiharu Shiota, and Oscar Muñoz.

The foundation's didactic and educational vocation is substantiated through a series of activities that run parallel to the exhibitions and through an active policy of loans to national and international institutions.



MAT COLLISHAW, THE END OF INNOCENCE. 2009  
COLECCIÓN FUNDACIÓ SORIGUÉ

## PLANTA

PLANTA is an innovative business management project based out of Sorigué's industrial complex in Balaguer (Lleida, Spain). This location is home to art, architecture, knowledge and a landscape that is both natural and industrial, creating an environment where industrial processes, research into new materials, and site-specific installations from contemporary artists drive creativity and talent.

PLANTA opened its doors to the public for the first time with *Double Bind* by Juan Muñoz. This monumental installation, considered to be the pinnacle work of this internationally renowned artist, was created in 2001 for the Turbine Hall in the Tate Modern. PLANTA has developed a unique space for this piece.

In the coming months, PLANTA will inaugurate site-specific pieces with the works of great artists such as Bill Viola, Chiharu Shiota, and Anselm Kiefer, among others. PLANTA can be visited by appointment.

## About Fundació Sorigué's contemporary art collection

Since the year 2000, Fundació Sorigué has been building one of the most renowned private collections of contemporary art in Spain, recognized with the 'Arte y Mecenazgo' prize, awarded by the "la Caixa" foundation, in May 2015; and the 2017 GAC Prize for Collecting, awarded by the Art Galleries Guild of Catalonia with the collaboration of the Asociación Art Barcelona.

# FUNDACIÓ SORIGUÉ

Consisting of more than 450 works by Spanish and international artists, the collection selects its pieces using criteria that are both professional and emotional—rather than specific styles, trends, or artists—, focusing always on the most sensitive and human aspects of art. As a result, internationally renowned artists feature alongside lesser known artists to develop an open collection where the interplay between the pieces themselves and between the public and the setting are especially significant.

The institution maintains an active lending policy with other Spanish and international entities. The collection has participated in exhibitions produced by the Thyssen-Bornemisza Museum in Madrid, the Museum of Modern Art in New York (MoMA), the Bilbao Fine Arts Museum, the Albertina Museum in Vienna, The Santa Mónica Art Museum in California, the Tate Gallery in Liverpool, the Centro Andaluz de Arte Contemporáneo - CAAC [Andalusian Center for Contemporary Art] in Seville, Arts Santa Mónica in Barcelona, the Palazzo Fortuny in Venice, and the Boston Museum of Fine Arts, among others.

## **Free Visits *Mat Collishaw. Dialogues***

In its desire to bring contemporary art to all audiences, Fundació Sorigué is offering **1,600 free tickets** to the exhibition through its website, [www.fundacionsorigue.com/matcollishaw](http://www.fundacionsorigue.com/matcollishaw). All of these tickets include the guided tour option.

Guided tours are organized in groups of up to 20 people with an approximate duration of 1h. The timetables are as follows: Friday: 5 pm; Saturday: 11 am, 12.30 pm, 5pm; and Sunday: 11 am and 12.30 pm.

Similarly, Fundació Sorigué will offer a special program of workshops for students through its educational area. Reservations for these visits can be made through the Royal Botanical Garden website.

## **Opening hours of the Pabellón Villanueva of the Real Jardín Botánico:**

Monday to Sunday in April, from 10 am to 8 pm

Monday to Sunday in May, 10 am to 9 pm

Plaza de Murillo, 2, 28014 Madrid

General Admission: €6

---

## **Communications Department, Fundació Sorigué**

**[comunicacion@sorigue.com](mailto:comunicacion@sorigue.com)**

**Sol Ortega +34 671 724 960/Laura Rosa +34 671 701 740/ Bet Garriga +34 673 124 212**

**[www.fundacionsorigue.com](http://www.fundacionsorigue.com)**